

YEAR 7 & 8 RANGIURU SCHOOL



2
0
2
6

Rangiuru School



*"A school where every child is known,
every opportunity is offered, and
every learner thrives."*

WELCOME TO RANGIURU SCHOOL



Welcome to Rangiuru School – where every learner is known, valued, and supported to shine.

At Rangiuru, our Year 7 & 8 students enjoy every opportunity to lead, learn, and grow in a supportive environment. They are encouraged to step up as leaders, take on meaningful responsibilities, and live our values while experiencing a wide range of academic, cultural, sporting, and outdoor opportunities that prepare them for a confident transition to high school.

Whether you are new to Rangiuru or already part of our whānau, you can be assured that your child's intermediate years will be memorable and rewarding, shaped by strong continuity, trusted relationships, and a caring environment that nurtures their unique strengths.

Nau mai, haere mai – we warmly welcome your whānau to journey with us as your child transitions into Year 7 & 8.

“There are so many opportunities to shine in leadership. Her confidence has naturally grown because the teachers trust and support them to make decisions about their own lives.”

“Year 7 & 8 at Rangiuru School is an awesome opportunity for our kids to keep developing really positive qualities that will see them go far in life.”

“My child is able to experience more opportunities that are available. My daughter's education at Rangiuru is tailored to her, it's not a one size fits all. If she wants something, or the teachers recognise she needs support in an area – it happens!”

'WHAKAMANA I AHAU' EMPOWER ME



MISSION

Empowering all tamariki to be connected, confident and caring lifelong learners.

VISION

For all students to develop the values of kaitiakitanga, whanaungatanga, manaakitanga and ako.

SCHOOL VALUES

 <p><i>"We are protectors of our environment"</i></p> <p>SUSTAINABILITY PROTECTOR WHENUA RANGINUI PAPATUANUKU CONSERVATION</p>	 <p><i>"We are family"</i></p> <p>BELONGING MAHI CONNECTION TAHI TAUTOKO IDENTITY AROHA TUAKANA TEINA</p>	 <p><i>"We care for ourselves and others"</i></p> <p>HAUORA RESPECT SELFLESSNESS MANA HONESTY EMPATHY KINDNESS</p>	 <p><i>"We learn, share and grow together"</i></p> <p>WISDOM WHAKAARO MATAURANGA AKO LEARNING INVESTIGATE PROBLEM SOLVING</p>
---	---	---	---

At Rangiuru School, our values are at the heart of everything we do, shaping daily learning, relationships, and decision-making. For our Year 7 & 8 students especially, these values guide who they are as learners and leaders. These values underpin our Rangiuru Graduate Profile: the lasting qualities every student leaves with, and the strengths they carry into life and the wider world.

WHY RANGIURU SCHOOL FOR YEAR 7 & 8?



STRONG RELATIONSHIPS & SENSE OF BELONGING

Every Year 7 & 8 student is truly known and valued. As the senior learners in our kura, they benefit from a close-knit community where strong connections with teachers, peers, and whānau create a powerful sense of belonging. This supportive environment gives our seniors the confidence to take on leadership, embrace new challenges, and thrive as they prepare for high school and beyond.

PERSONALISED LEARNING

Learning for Year 7 & 8 students is personalised to prepare them for their next steps. Teachers design programmes that extend their strengths, target specific needs, and build on their individual interests, while also reflecting the aspirations of their whānau. This approach ensures our seniors are both challenged and supported, with learning that is meaningful, relevant, and helps them grow into confident, capable young people ready for future opportunities.

BALANCED CURRICULUM

Students are taught in line with the New Zealand Curriculum (Tāhūrangi), with a strong focus in Literacy and Numeracy, and high expectations for achievement. Learning connects meaningfully to our local environment and community, to make learning real and relevant.” Our seniors also enjoy a wide range of extracurricular opportunities, ensuring every student can discover and develop their passions.



LEADERSHIP OPPORTUNITIES

Our Year 7 & 8 students are encouraged to step into leadership roles and responsibilities as part of their senior years. Every student is given authentic opportunities to lead – from developing and leading school initiatives, to running assemblies and events, and mentoring younger learners in tuakana-teina relationships. With more leadership opportunities available, our seniors drive our school values and culture, while enjoying the privileges that come with being recognised as the leaders of our kura.

STUDENT VOICE & AGENCY

At Rangioru School, student voice is highly valued. Our Year 7 and 8 learners are provided with meaningful opportunities to participate in decision-making related to both their learning and the wider school environment. They are encouraged to share ideas, offer feedback, and actively contribute to initiatives that foster positive change. Through leading projects that reflect their interests and strengths, our senior students understand that their perspectives are important and that their contributions have a genuine impact.

WELLBEING & HAUORA

The wellbeing and hauora of our Year 7 & 8 students is a top priority. We place high value on supporting the whole person – ensuring our seniors feel safe, respected, and cared for as they navigate their intermediate years. In our close-knit community, kindness and respect shape everyday life, allowing students to focus on learning, friendships, and leadership. It's a place where kids can simply be kids – free from the unnecessary distractions of technology and other pressures – giving them the space to grow in confidence, positivity, and pride.

KERERU CLASS OF 2026



EDUCATION OUTSIDE OF THE CLASSROOM

At Rangiora School, we know that real growth happens when students are challenged to do hard things. Our Year 7 & 8 learners are offered a wide range of EOTC opportunities, alongside two camps, that encourage them to step outside their comfort zones, take on new challenges, and discover what they are capable of. Through challenge by choice, students build resilience, confidence, and determination. These experiences strengthen teamwork, problem-solving, and independence. By providing so many opportunities to take on challenges, our senior students develop the courage and confidence to face obstacles head-on, knowing they have the resilience and skills to thrive both at school and in the years ahead.



Senior Camp
Redwood Valley



Senior Camp
Ngatuhua Lodge



Hiking /
Bush Walking



Adrenalin Forest
High Ropes



Surfing
Lessons



Rock
Climbing

LEADERSHIP



Student
Council

Our Student Council ensures student voice is at the heart of school life.

Our carefully selected Student Ambassadors are the face of the school, representing our values, welcoming visitors, and planning and leading key events. They are a daily presence in classrooms and out in the playground at break times—teaching, encouraging, and supporting others to live our school values.

Our current additional leadership pathways are: Sports Leaders, Arts Leaders, and Kaitiaki Tikanga.



National Young Leaders
Day

Beyond their day-to-day roles, our Student Council take part in a range of development opportunities such as the GRIP Leadership Conference, the National Young Leaders Day, a school Leadership Learning Day, and an end-of-year Leadership Lunch Celebration. These experiences build confidence, grow leadership skills, and connect our students with wider networks of young leaders.



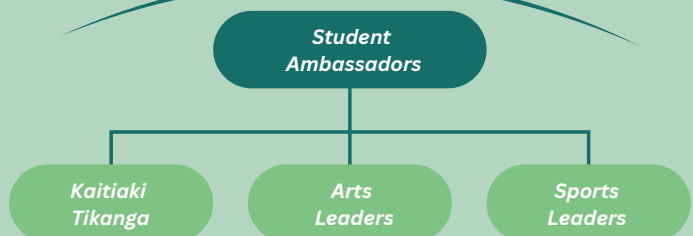
Grip Leadership
Conference

Together these leaders are at the heart of our school culture - inspiring their peers, creating opportunities for others, and ensuring our values are woven into everyday life at Rangioru.



Leadership Learning Day &
Leader Lunch

Student Council



SPORTS



AIMS
Games



Western BOP Sports Events
& Tournaments



Interschool Sports Events &
Tournaments

At Rangioru, we offer our Year 7 & 8 students a wide variety of sporting opportunities through Western Bay and Interschool events. From cross country, athletics, swimming, rippa, and netball to other activities that spark their interest or fuel their passion. All of our Year 7 & 8 students take part in the AIMS Games, one of New Zealand's largest sporting events for intermediate-aged students.

KERERU CANTEEN



The Kererū Canteen is organised and run by our Kererū Class, giving authentic business experience! It is the main fundraiser for our Education Outside the Classroom programme, alongside the weekly Kererū Sausage Sizzle. Kererū Canteen teaches valuable skills in financial literacy, such as handling money, budgeting, setting prices, keeping records, understanding profit and loss, and making responsible spending and saving decisions.

OUR SCHOOL CURRICULUM



Engaging &
Hands On



Strong Literacy &
Numeracy



Integrated, Connected &
Authentic

Our school curriculum is deeply grounded in our values and reflects the unique identity, history, and environment of our local community. Designed in partnership with the community and guided by our school pepeha, our themes and units are carefully chosen to connect with seasonal changes, significant local events, and the natural taonga of our area.

Our localised curriculum is strongly science, social science, and Aotearoa New Zealand Histories focused, ensuring that students explore the natural world, local history, and cultural heritage in meaningful and relevant ways. This includes the important role of kapa haka, which strengthens identity and pride in tikanga Māori. Learning is deliberately hands-on and experiential, with students regularly engaging in outdoor, community-based, and environmental projects, such as Garden to Table and Maketu Wetland Society.

A defining feature of our approach is the way topics and themes are integrated into our strong Literacy and Numeracy programmes. These authentic learning opportunities sit alongside our explicit, structured, daily Literacy and Numeracy programmes, which ensure that all students build solid foundations in reading, writing, and mathematics while also being challenged to apply their skills in rich, connected contexts.

Our curriculum empowers students to become capable learners who are deeply rooted in their whenua (land), culture, and community, and equipped with the confidence, curiosity, and core skills to thrive in the wider world.



*For any additional school information
(enrolment, bell times, transport etc) please visit
our website.*

*For any questions regarding our Year 7 & 8
programme, please contact
natasha@rangiuru.school.nz*